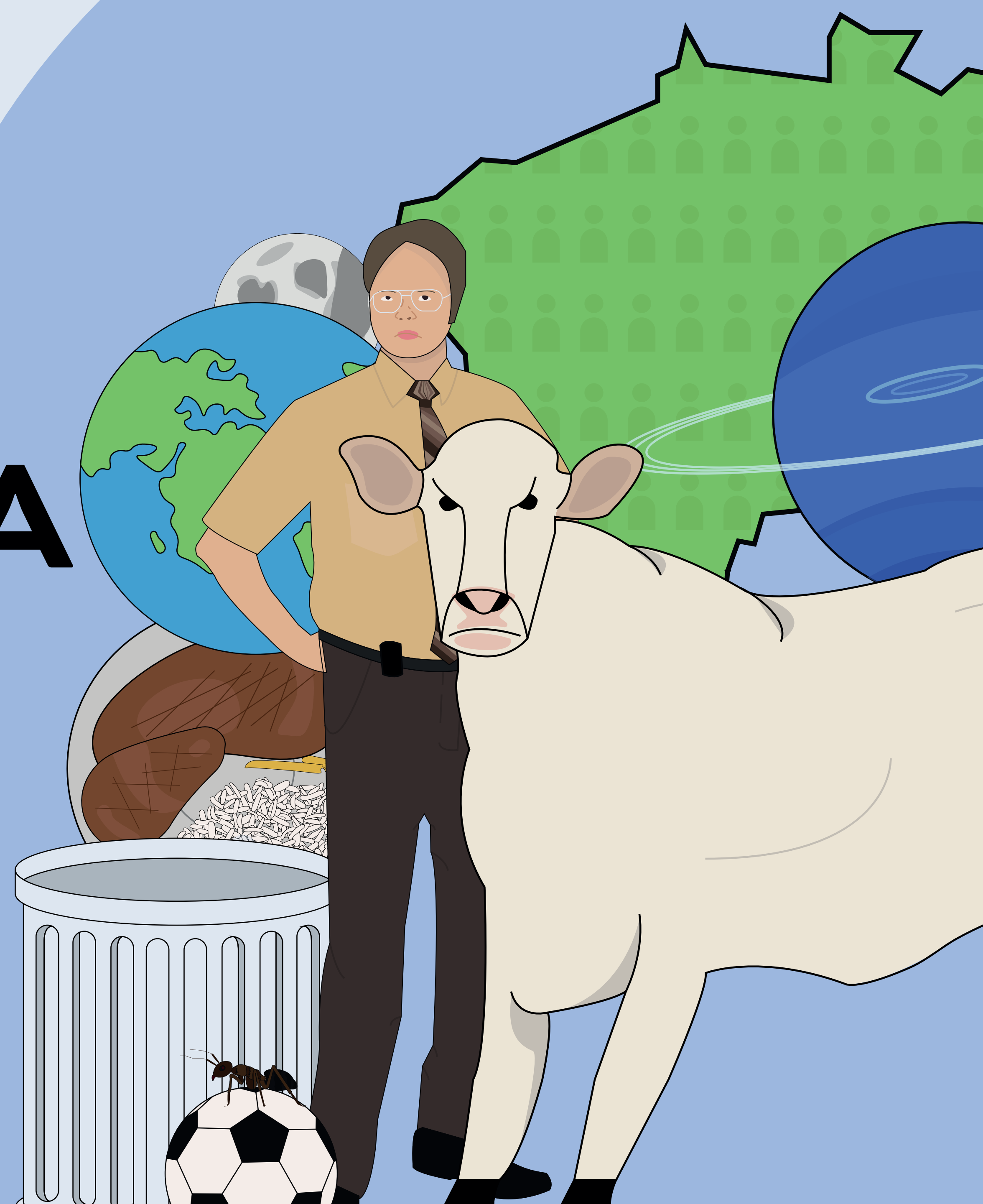


Vinicius Lorosa

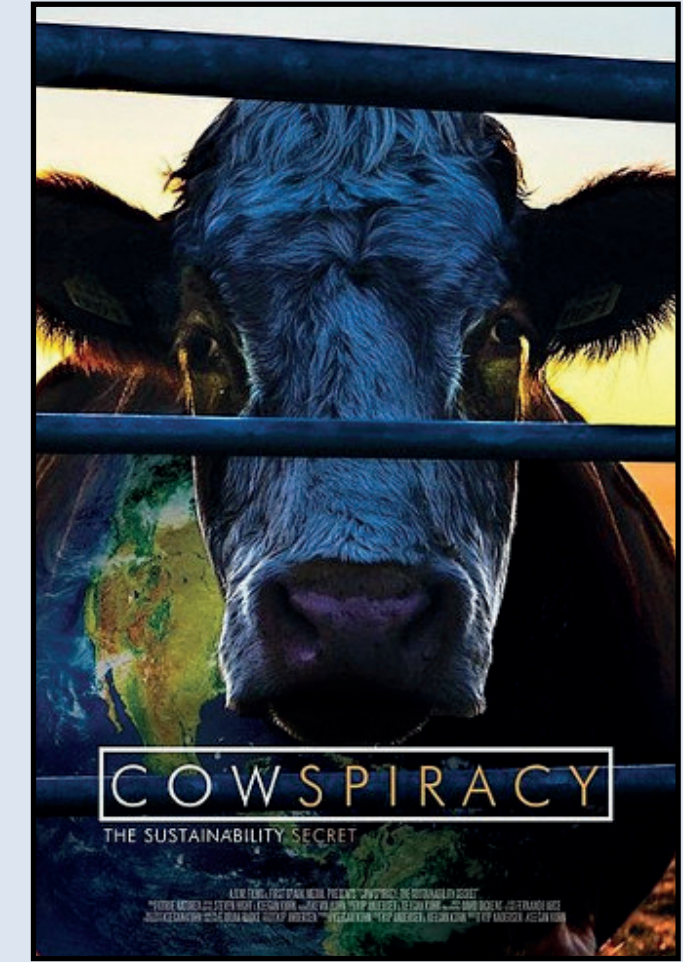
NO FIM, TUDO ACABA EM ÁGUA

Visualização Criativa de Dados
UFRJ 2024.1



(dados muito bem escondidos shhhh...)

~~consumo de água pelo
agronegócio brasileiro~~



Dados sobre água

(dados de diversos alimentos
catalogados por pesquisadores)

pegada hídrica dos alimentos

"Cowspiracy" (2014)

"pprt faz sentido"

o problema dos bovinos

METÁFORA

(is my passion)

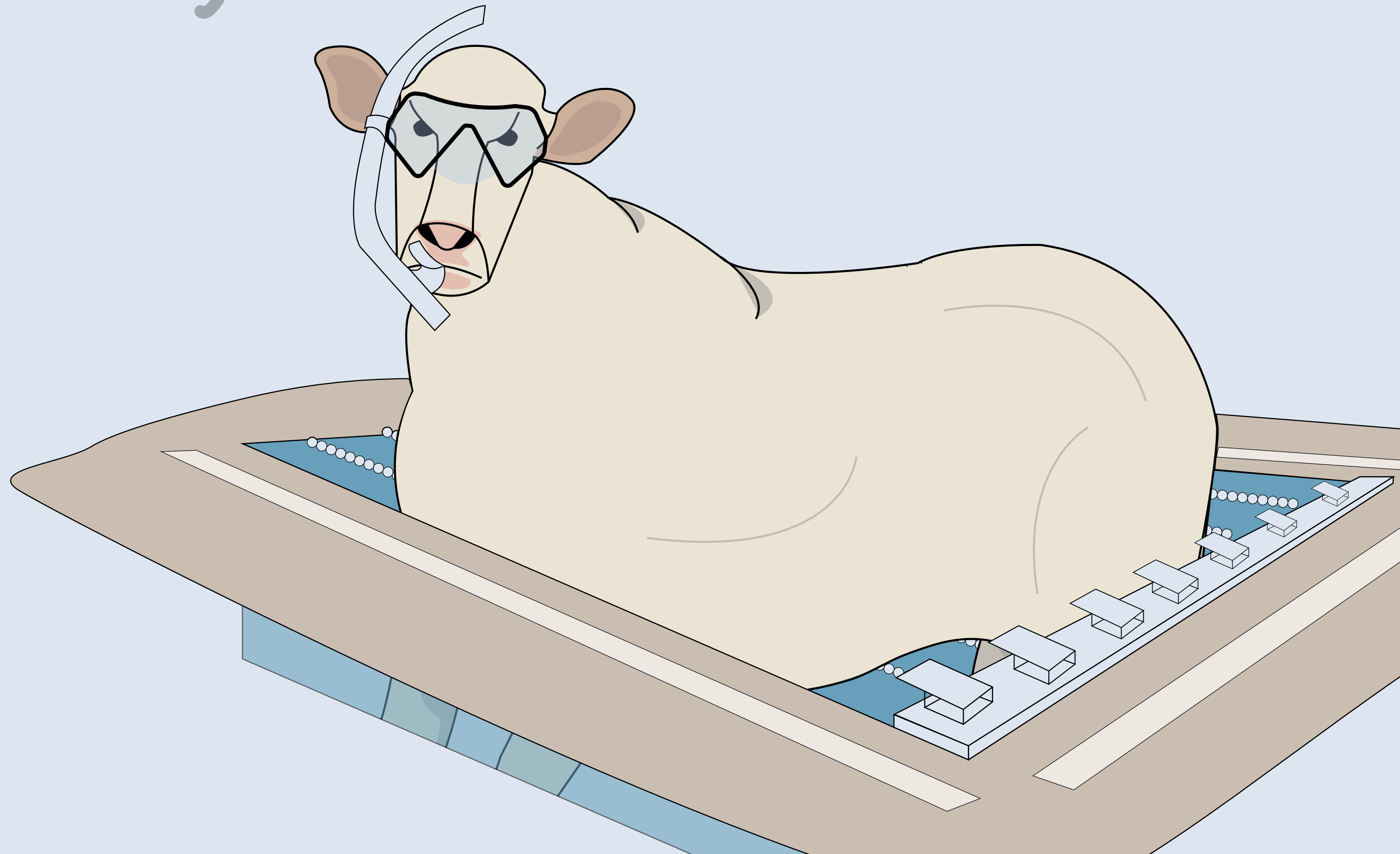
Fácil de ver

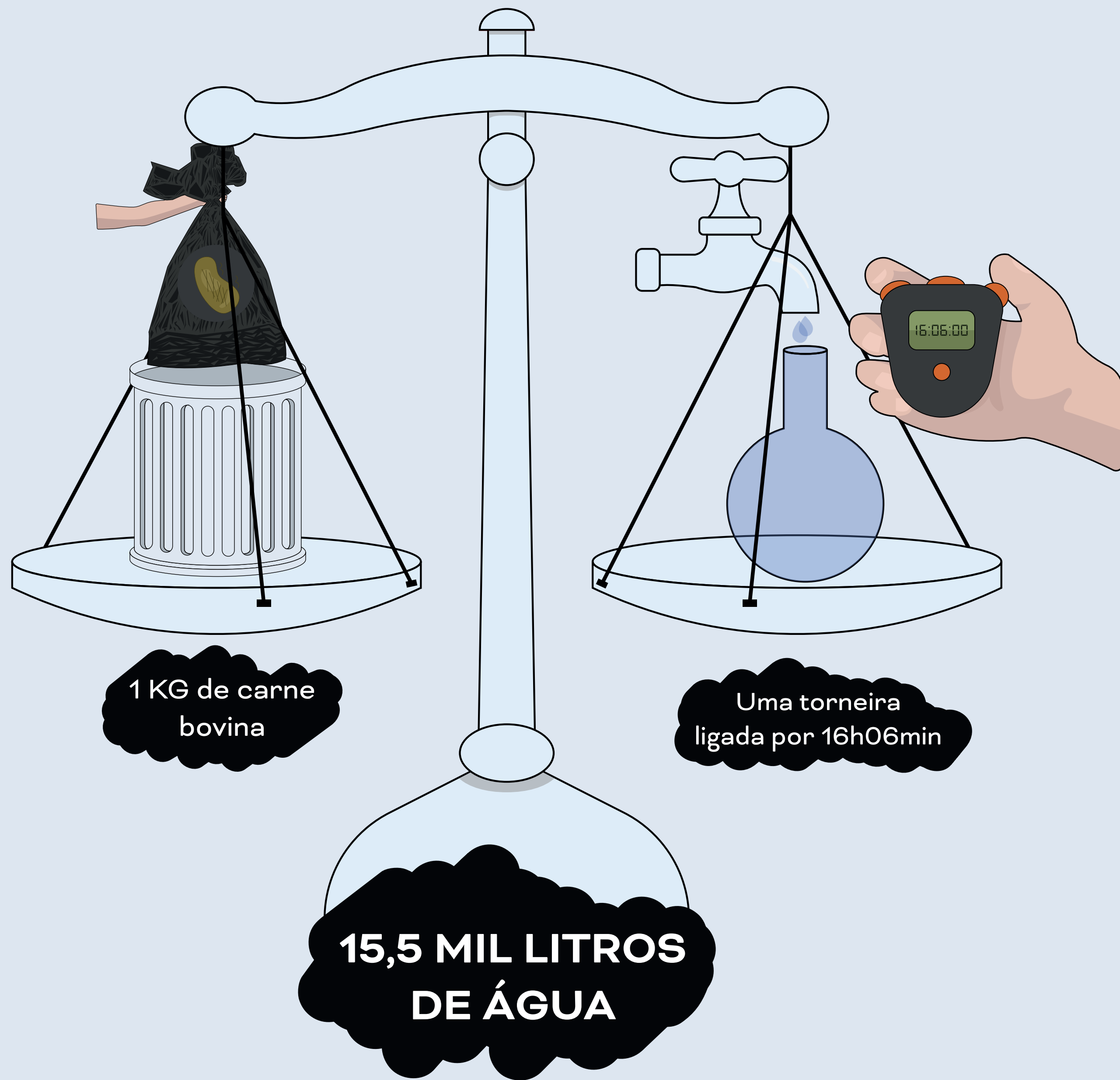


Fácil de entender

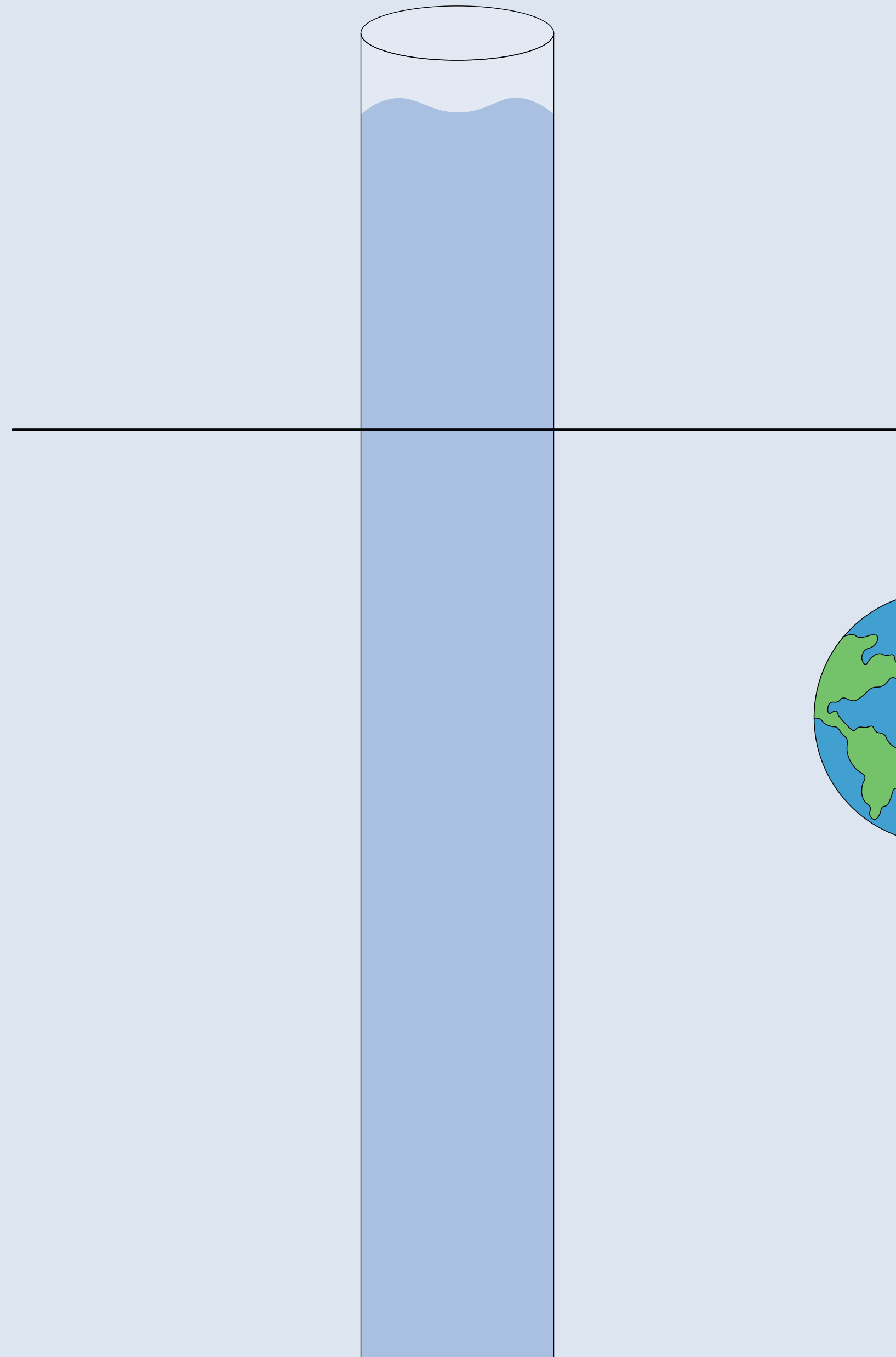
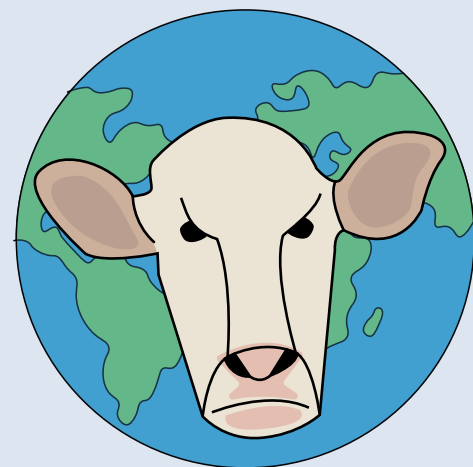


Fácil de comparar

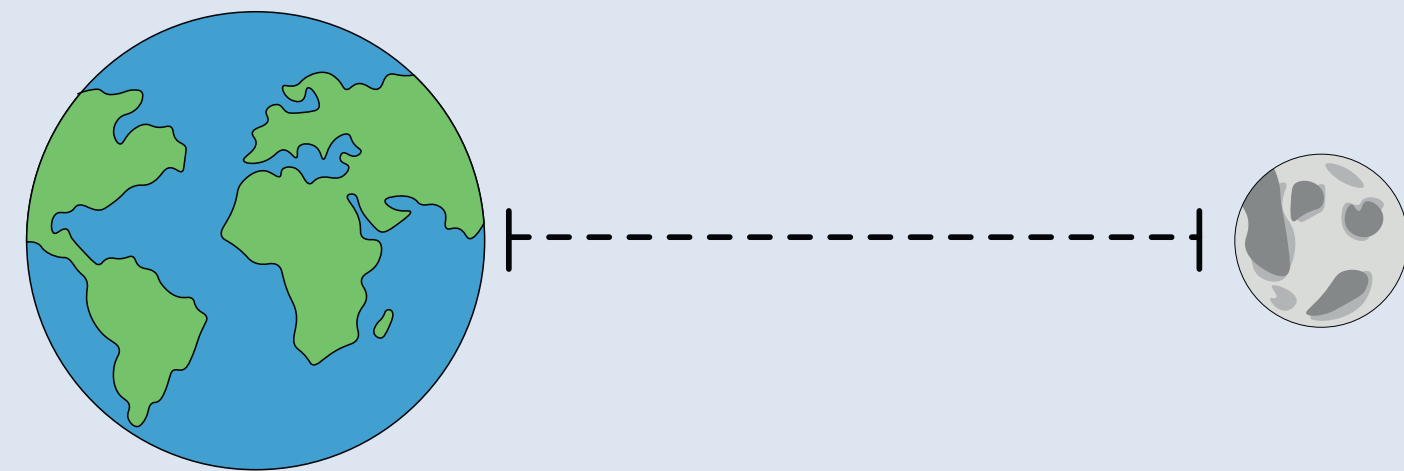




Consumo mundial
por bovinos
($1 * 10^{15}$ L/ano)



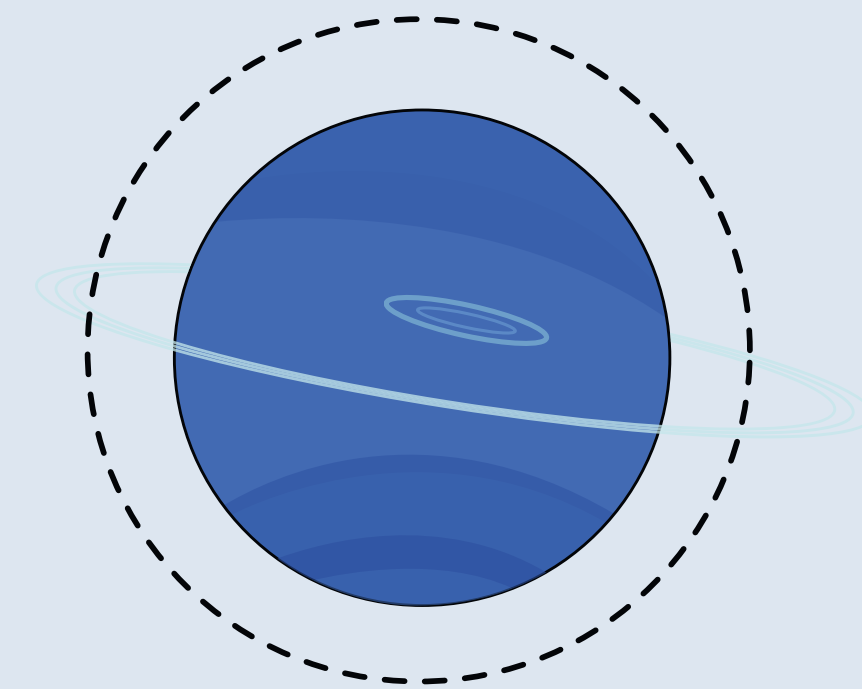
Distância da
Terra à lua
($3,8 * 10^8$ m)



Consumo
doméstico mundial
($5,3 * 10^{14}$ L/ano)



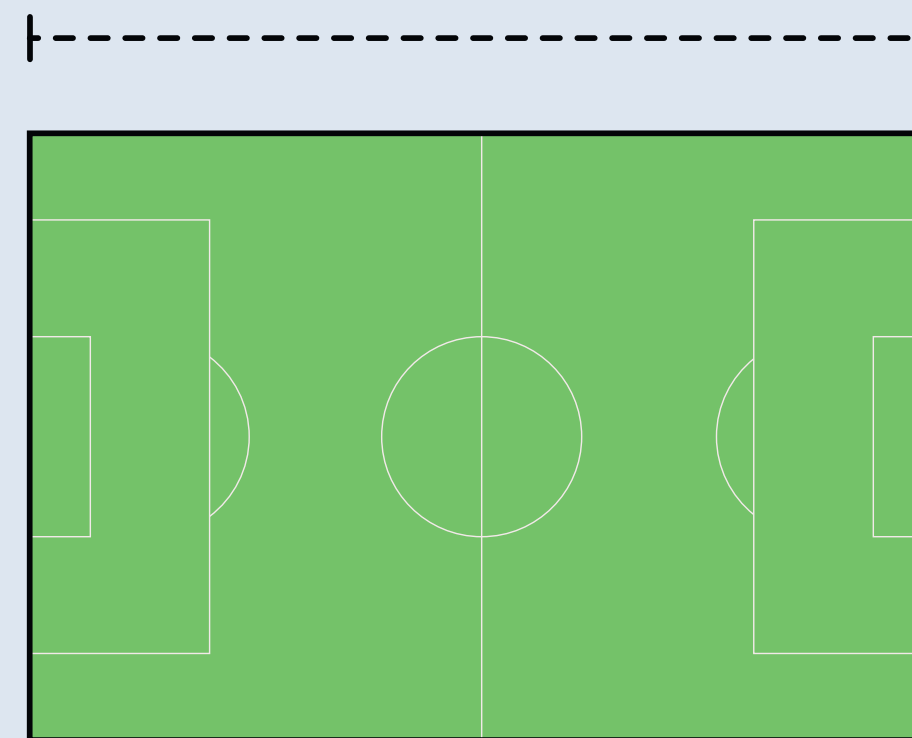
Diâmetro do
planeta Netuno
($4,9 * 10^7$ m)



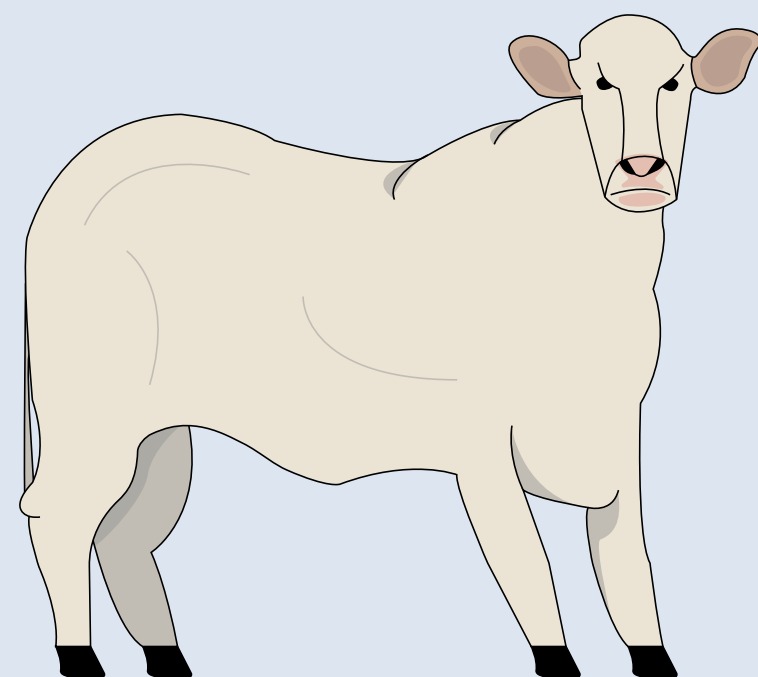
Consumo de
todo o Brasil
($1,6 * 10^{13}$ L/ano)



Comprimento de um
campo de futebol
(120 metros)



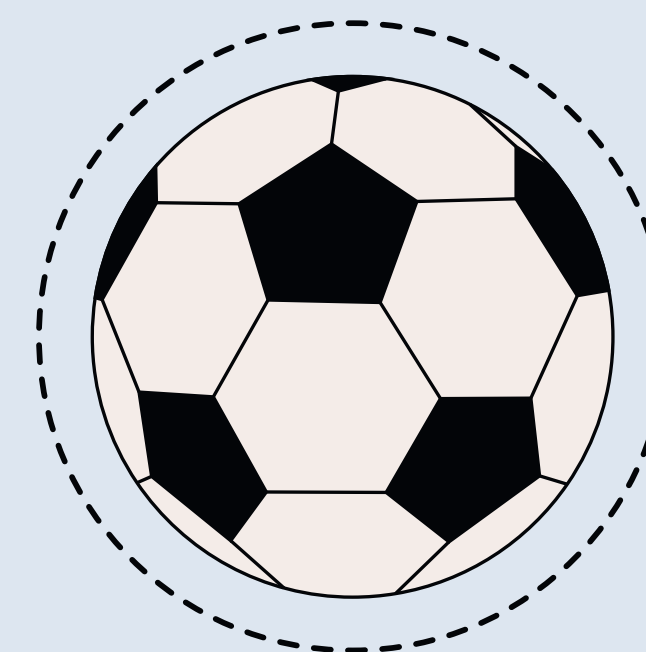
Um bovino
para abate
(1.000.000 L/ano)



Um adulto
médio
(73.000 L/ano)



Diâmetro de uma
bola de futebol
(22 centímetros)



Comprimento de
uma formiga
(4 milímetros)

